



PUI CHING MIDDLE SCHOOL

COLOANE CAMPUS



FROM DREAMS
TO ACHIEVEMENT

成就夢想

培正自1889年在廣州創立了中國第一所由華人基督徒開辦的新型學校開始，經歷了一百多載春秋，在「至善至正」的校訓引領下，為一代又一代的培正人完成夢想。隨著培正中學（路環校部）於2024年9月正式開校，並提供一條龍式國際化教育，將為澳門培正開啟新的一章，為紅藍兒女提供更多機會和平台，成就夢想。

Since its establishment in 1889 in Guangzhou, Pui Ching has held the distinction of being the first modern school founded by Chinese Christians. Throughout its history, Pui Ching has remained steadfast in its pursuit of academic excellence, serving as a guiding light for countless generations of students who aspire to realize and achieve their dreams. The school's foundational motto, "Utmost Goodness, Utmost Righteousness," has been a beacon of hope, shaping the values and aspirations of its students.

With the official opening of Pui Ching Middle School (Coloane Campus) in September 2024, a new chapter begins for Pui Ching in Macau. As a private, through-train internationalized school, Pui Ching Middle School (Coloane Campus) expands the horizons for students, providing enhanced opportunities and platforms to pursue their dreams.

CORE VALUES



CORE
VALUES

核心價值

至善至正

Utmost Goodness,
Utmost Righteousness

非以役人，乃役於人

Not to Be Served, But to Serve

紅藍精神

The Spirit of Pui Ching

誠實友愛

Honesty and Love

團隊合作

Teamwork and Collaboration

解難能力

Problem-Solving Skills

敢於擔當

Personal Responsibility

勇於創新

Courage to Innovate

文化自信

Cultural Confidence

國際視野

Global Perspective

OUR
VISION



OUR
VISION

我們的願景

培正中學（路環校部）作為澳門一所具有全球化理念的一條龍本地學校，在傳承中華優秀傳統文化、推進文化自信的基礎上，培養學生成為具有國際理解力、國際競爭力，並能與世界溝通的未來人才。我們致力為每一位學生圓夢，讓他們學會選擇，迎難而上，塑造良好品格；通過開展不同平台，發掘學生潛能，與世界接軌，共同推動個人及社會福祉。

Pui Ching Middle School (Coloane Campus), as a local through-train school in Macau with a global perspective, places a strong emphasis on inheriting excellent traditional Chinese culture and promoting cultural confidence. We aim to cultivate students who possess international understanding and competitiveness, and the ability to communicate with the world. We are committed to helping students to pursue their dreams and aspirations by guiding them to develop decision-making skills, proactive approach to challenges, and good character traits. Through a variety of platforms and opportunities, we strive to discover and unleash the unique potential of every student, encouraging their active participation in the global community and contributing to the well-being of both individuals and society.

FROM DREAMS
TO ACHIEVEMENT

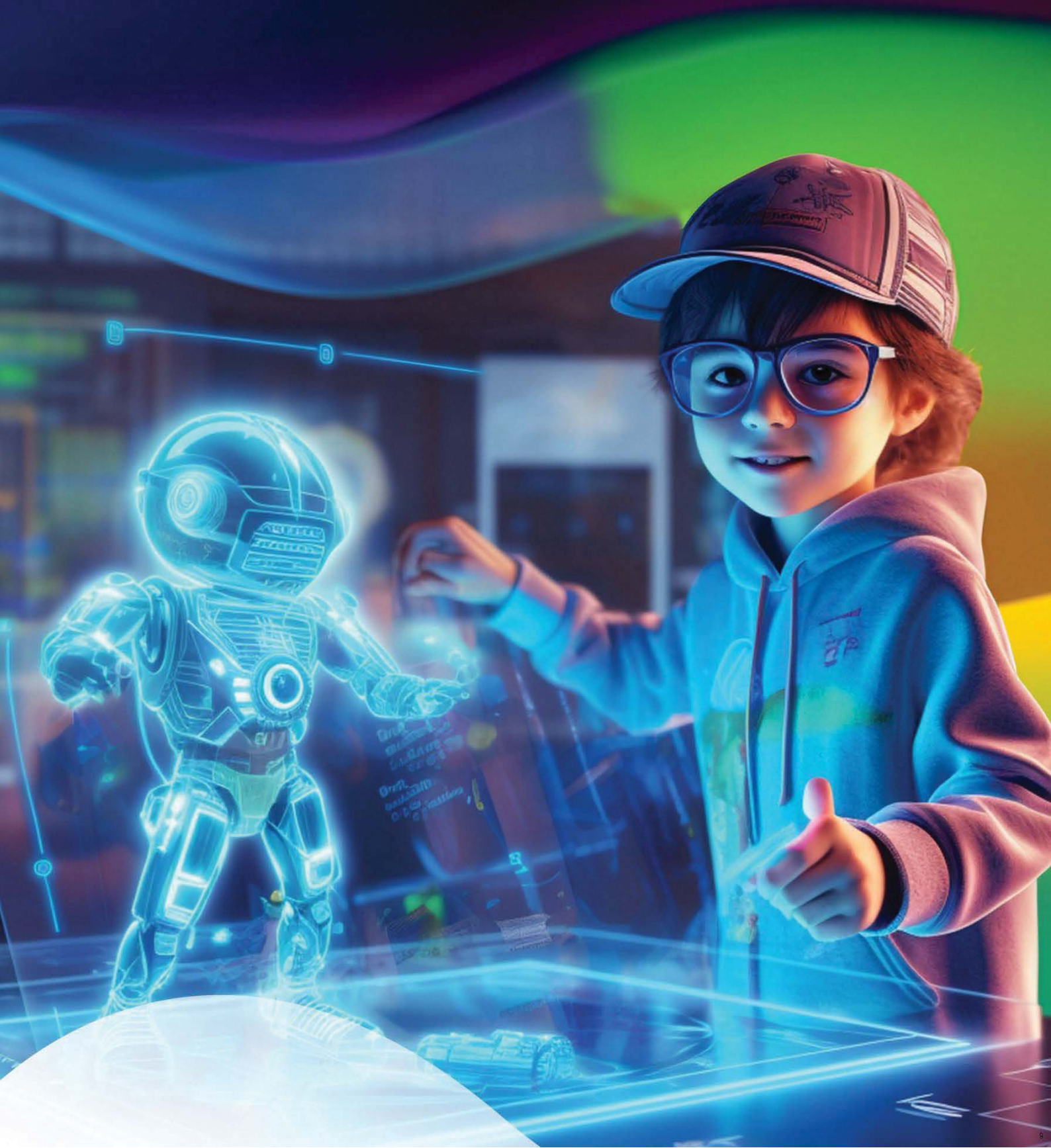


FROM DREAMS TO ACHIEVEMENT

成就夢想的路徑

- 提供多語言及跨文化學習環境，培養全球素養；
 - 從遊戲中學習和鍛煉體魄；
 - 發掘學生潛能，提供個性化教學；
 - 為學生搭建不同發展平台；
 - 幫助學生學會選擇，自主學習；
 - 透過專題研習實踐知識，培養創造性思維；
 - 校本與國際認證課程相結合，提升學術競爭力；
 - 提供不同國家及地區的升大輔導，讓學生考上心儀大學；
 - 培養學生協作式問題解決能力；
 - 提升學生迎難而上、堅毅不屈的健康心理素質。
-
- Embracing multilingualism, cultivating global competence
 - Nurturing body and mind through the power of play
 - Unleashing potential with personalized teaching approach
 - Providing diverse platforms for growth and development
 - Encouraging decision-making, fostering self-directed learning
 - Engaging knowledge and nurturing creative thinking through project-based learning (PBL)
 - Merging local and international curricula into global wisdom
 - Offering guidance on global pathways to dream universities
 - Enhancing collaborative problem-solving skills
 - Cultivating resilience, forging a strong mentality

CURRICULUM OVERVIEW



CURRICULUM OVERVIEW

課程設置

幼兒階段，我們參考英國EYFS (Early Years Foundation Stage) 理論，構建校本課程，培養學生語言、身體、智力、社交、藝術等方面的發展。

小學階段，以國際權威教材為課程設計核心，配合劍橋英語課程及測評，讓學生在小學階段已能利用英文學習學科知識，同時培養國際視野；此外，透過課內外活動及競賽，培養學生強健體魄及良好溝通協作能力，為中學學習階段打好基礎。

中學階段，我們會提供國際認證課程，包括IGCSE及A Level等，並加入校本課程元素。在基本課程以外，學校會因應學生的不同發展需要，開展多元化的聯課活動、競賽及學習平台，配合個別化的升學輔導，幫助學生探索興趣、發掘優勢，讓他們申請到真正適合自己的理想大學。

由小幼階段開始，我們會開展專題研習，利用自攜電子設備，搭建學習場景，讓學生自主探索，提升解難能力，並打破舊有的教室桌椅佈局，改為隨時能進行小組研習、非單向式授課的學習環境，促進學生自主及合作學習。培正中學（路環校部）的課程目標，是培養學生成為「世界公民」，具有良好的語言和學術基礎、國際視野以及文化自信。

In our early childhood program, we embrace the renowned Early Years Foundation Stage (EYFS) Theory developed in the UK. This framework serves as the foundation for our curriculum, encompassing key areas of a child's development, such as communication and language, physical development, literacy, social development, and expressive arts and design.

As students progress to the primary school level, our curriculum combines internationally recognized educational materials with the esteemed Cambridge English curriculum and assessments. This approach empowers students to acquire subject knowledge in English while exploring subject matters from diverse cultural perspectives. Through a blend of curricular and extracurricular activities, as well as participation in competitive events, students develop physical fitness, foster effective communication, and cultivate collaborative skills, providing a strong groundwork for their secondary school journey.

At our secondary level, we offer a merge of local curriculum and a range of esteemed international certification courses, including IGCSE and International A-Level programs. In addition to the core curriculum, we provide abundant learning opportunities such as exchange activities and competitive events, enabling students to discover their potential and broaden their horizons. Our dedicated university counselling service ensures personalized guidance as students explore their interests, identify their strengths, and ultimately find the universities that align with their aspirations on a global scale.

Starting from the lower grades, we implement project-based learning and the BYOD (Bring Your Own Device) program to create learning scenarios that foster students' autonomy, critical thinking, and problem-solving skills. Our classrooms are intentionally designed to facilitate independent and collaborative learning, with arrangements that encourage vibrant group discussions and meaningful student-to-student interactions.

Above all, at Pui Ching Middle School (Coloane Campus), we are deeply committed to delivering a rigorous academic curriculum that not only equips students with strong language skills but also cultivates their growth as global citizens with a deep sense of regional belonging.

EXTRACURRICULAR ACTIVITIES



EXTRACURRICULAR ACTIVITIES

聯課活動

除正規課堂外，培正中學（路環校部）同樣致力提供多姿多彩的聯課活動，小幼階段以「遊戲中學習」、「遊戲中鍛煉體魄」為核心發展方向。學校將提供演說、藝術、音樂、設計、創新科技等活動，以及攀岩、劍擊、賽車、高爾夫、足球等體育活動，期望通過這些項目，讓學生增強自我意識，培養自信，提高創造力，樂於合作，善於溝通，富有同情心和思辨能力。我們期望學生從小找到自己喜愛發展的項目，在成長過程中鍛煉心理韌性，學會專注投入，以克服日常生活中遇到的挫折。

在路環校部，我們除了助力學生取得優異的學術成績之外，更重視學生整體素質的培育，讓學生在正規課堂和聯課活動中學習，幫助學生成為身心靈健康、知識層面廣、具社會關愛的未來人才。

At Pui Ching Middle School (Coloane Campus), we understand the importance of a well-rounded education that extends beyond the confines of the classroom. In addition to our regular comprehensive instruction, we are equally committed to providing a diverse range of extracurricular activities that enrich the overall student experience.

During the early childhood and primary school years, we place a strong emphasis on "nurturing body and mind through the power

of play." To achieve this, we offer a wide array of activities such as public speaking, art, music, design, innovative technology, rock climbing, fencing, car racing, golf, soccer, and many other exhilarating pursuits. These extracurricular activities serve as avenues for self-discovery, fostering confidence, stimulating creativity, promoting teamwork, enhancing communication skills, nurturing empathy, and cultivating critical thinking abilities. We believe in encouraging students to explore their areas of interest from an early age, building psychological resilience as they progress, developing concentration skills, and overcoming challenges encountered in their daily lives.

At Pui Ching Middle School (Coloane Campus), we are dedicated to academic excellence as well as the holistic development of our students. We adopt a balanced approach to education, aiming to nurture individuals who demonstrate physical well-being, emotional well-being, spiritual well-being, social responsibility, and intellectual competence.

CHARACTER DEVELOPMENT



CHARACTER DEVELOPMENT

品格塑造

《箴言》有語：「教養孩童，使他走當行的道，就是到老他也不偏離。」
(箴言22：6) 培正中學是一所基督教學校，在德育工作上，學校會按照《聖經》原則，培養學生追求「至善至正」的品格素養。

培正中學（路環校部）繼承培正的優良傳統，將全民德育的理念，融入不同的課程和聯課活動，以塑造學生品格。透過有意義和規劃的課程設計，在不同學科加入德育元素，重視提高學生的心理韌性，讓學生掌握與人溝通及合作能力，感恩關愛，勇於嘗試，敢於擔當；並且透過教師團隊悉心輔導，培養學生迎難而上、堅毅不屈的健康心理素質，學會「勝不驕，敗不餒」的精神。

Pui Ching Middle School (Coloane Campus) is a Christian school with a commitment to character education rooted in the principles of the Holy Bible. Guided by the wisdom found in Proverbs 22:6, which states, "Train up a child in the way he should go: and when he is old, he will not depart from it", we aspire to cultivate in our students an unwavering pursuit of "utmost goodness" and "utmost righteousness".

In line with the rich tradition of Pui Ching, our approach to character education is holistic, aiming to instil moral values,

principles, and ethical understanding in our students. Our curriculum is thoughtfully structured to integrate moral education within various aspects of both curricular and extracurricular activities. Through this approach, we strive to equip our students with psychological resilience, effective communication and teamwork skills, an attitude of compassion and gratitude, and a strong sense of personal responsibility.

Dedicated to nurturing the spiritual well-being of our students, we encourage them to face challenges with determination, embrace humility in victory, and demonstrate graciousness in defeat. Our aim is to guide them in developing a strong moral compass that will serve as a guiding light as they navigate the complexities of life.

CAREER PLANNING



CAREER PLANNING

生涯規劃

幫助學生實現夢想，是培正中學（路環校部）其中一個重要任務。在老師悉心指導下，每一位學生都將有專屬自己的生涯規劃。從小開始，學生就能參與不同的課程與活動，從中不斷嘗試，從嘗試中學習，在學習中發掘興趣，找到夢想。

學校將按照學生不同階段的需要，提供適合該年齡層的認知和探索職業的活動，透過與不同專業領域的單位合作，讓學生接觸到社會的真實面貌，並透過各類型項目，為學生制定實現目標的策略，教導學生學會選擇的重要性。

At Pui Ching Middle School (Coloane Campus), one of our fundamental missions is to empower students to achieve their dreams. We understand that each student has unique aspirations, and to support them in their journey, we provide personalized academic counselling services. Through this dedicated guidance, we help students develop individualized career plans that align with their interests, strengths, and goals.

From an early age, students at our school are encouraged to explore their various potentials through a range of age-appropriate

activities. We foster collaborations with organizations across different industries, giving students invaluable opportunities to gain insights into real-world work environments. By engaging in these experiences, students can gain a practical understanding of different professions and make informed decisions about their future paths.

Additionally, we facilitate various projects that encourage students to develop action plans, transforming their career aspirations into tangible realities. These initiatives foster decision-making skills, enabling students to make informed choices, tackle complex problems, and navigate the challenges they encounter throughout their lives.